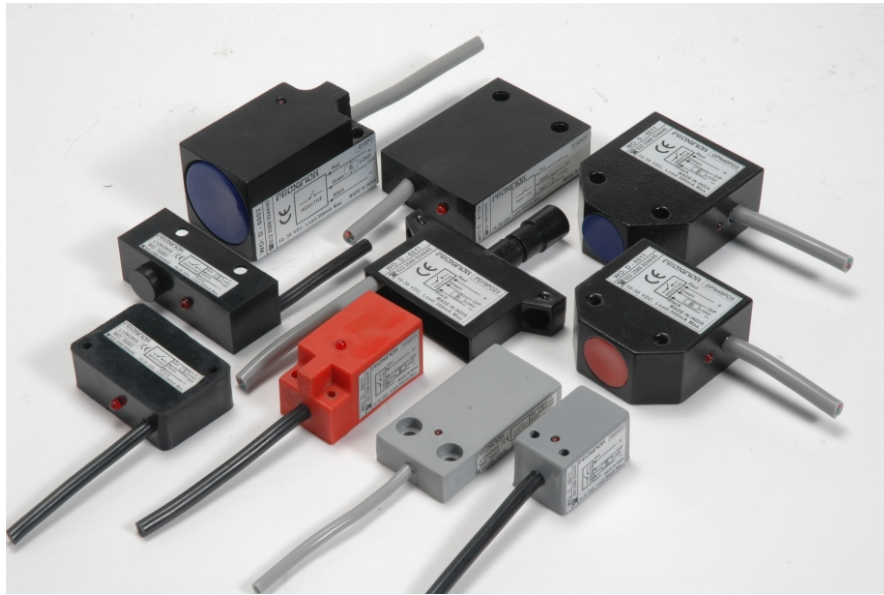


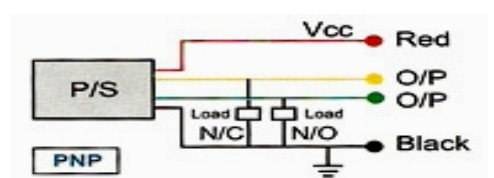
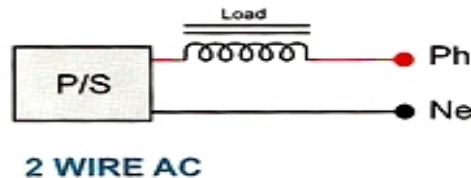
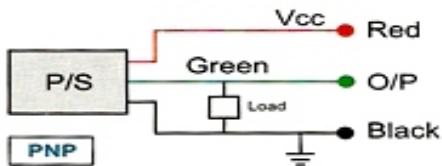
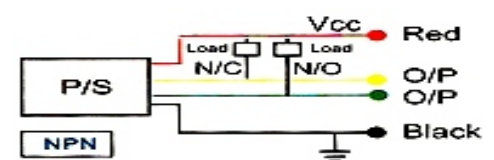
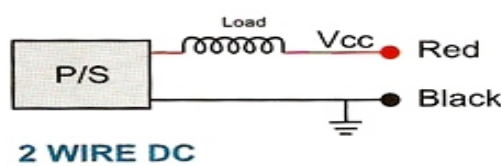
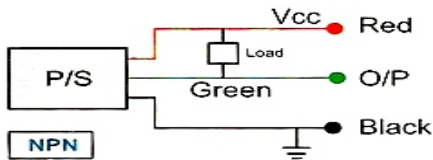
# INDUCTIVE SENSORS (BLOCK TYPE)



These are constructed in Rectangular, T type, Slot type, Pentagonal and Block types sensors. The technical specifications are similar to standard cylindrical sensors and are available in 3 wire DC & 2 wire AC types.

RECTANGULAR SENSORS		T TYPE SENSOR	Sn = 2mm	BLOCK SENSORS	
H x W x D (mm)	Sn (mm)	<b>Slot Sensor</b>		Sq x D (mm)	Sn (mm)
16 x 19 x 35	4	H x W x D(mm)		17 X 17 X 28	5
16 x 19 x 49	4	60 x 45 x 30		20 X 20 X 38	4
50 x 25 x 10	5	Sensing gap	Sn = 15mm	30 X 30 X 53	10
14 x 40 x 26	2	<b>Pentagonal Sensor</b>	Sn = 5mm	40 X 40 X 112.5	20

## CONNECTION DIAGRAMS



### Proximity Sensor can be used:

- ◆ To drive DC relay
- ◆ To drive DC contactor (ask for load current 500 mA)
- ◆ To drive AC relay / AC contactor
- ◆ Can be coupled directly to any PLC / DCS / Logic Circuits
- ◆ Can be used as an input for a Digital Counter / RPM Indicator etc.



**PROXIMON**  
We Command and Control



### PROXIMON CONTROLS PVT. LTD.

202, Krishna, Laxmi Industrial Complex,  
Pokharan Road No. 1, Vartak Nagar, Thane-400 606, INDIA  
Tel.: 91-22-2588 9244 / 45, 2585 4287  
Fax: 91-22-2588 9246  
e-mail: info@proximon.com Website: www.proximon.com