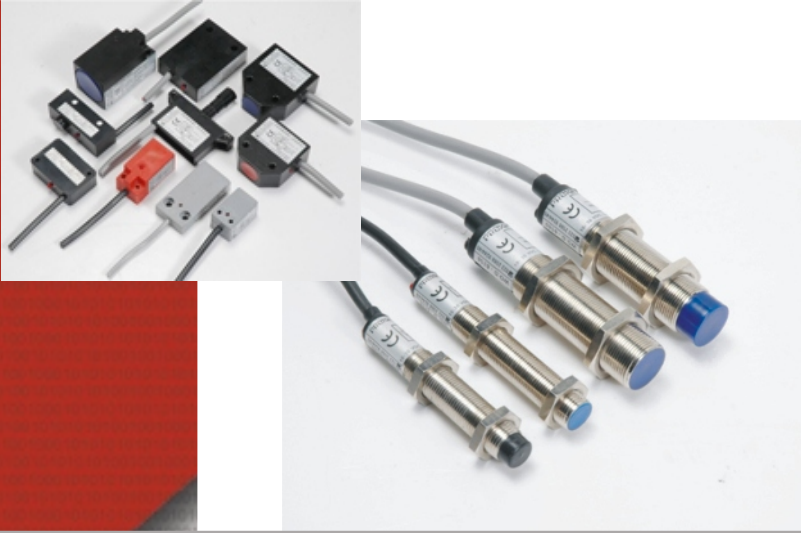




- INDUCTIVE PROXIMITY SENSORS
- PHOTOELECTRIC SENSORS
- CAPACITIVE PROXIMITY SENSORS
- PRINT MARK SENSORS
- DIGITAL LOGIC CONTROLLERS
- SWITCH MODE POWER SUPPLIES
- PROGRAMMABLE COUNTERS
- COUNT CUM SPEED INDICATOR
- TOTALISER CUM RATE INDICATORS
- SPEED CONTROLLER
- OPTICAL SHAFT ENCODERS
- HOLLOW SHAFT ENCODERS
- ABSOLUTE ENCODERS
- "TiCO" COUNTING SYSTEMS
- TOTALISERS
- HOUR METERS

PROXIMON
We Command and Control





- ❑ Used for sensing metal objects
- ❑ Cylindrical M8 to M80
- ❑ Sensing distance 1 to 35 mm
- ❑ Block type, Slot type, Pentagonal & T type with front, top and side sensing
- ❑ 2 wire (10-60 VDC), 3 wire (10-30 VDC) Versions
- ❑ 2 wire (90-250 & 20-250 VAC) Versions
- ❑ More than 450 variants available

INDUCTIVE PROXIMITY SENSORS

PROXIMON



- ❑ DBT - Diffused beam type (IR Proximity) 100 mm to 3 mtrs - Cylindrical / block type
- ❑ SBT - Straight beam type - Sensing range upto 15 mtrs
- ❑ SBTA - Straight Beam Type with built -in amplifier range upto 10 mtrs
- ❑ Slot Type Sensors with Slot gap 20mm, 50mm, 120mm, 220mm
- ❑ Retro Reflective (mirror reflective) sensors up to 10 mtrs

PHOTO ELECTRIC SENSORS

PROXIMON



- ❑ PMS - Print Mark Sensors - These are designed for sensing registration mark. It gives the signal on detecting the presence of registration mark on the moving packaging film
- ❑ Forward Controller - is used in packaging machine along with Print Mark Sensor to control clutch break mechanism
- ❑ Forward / Reverse Logic Controller - In most of the FFS (Form Fill Seal) machines, Forward Reverse Logic Controllers are used to keep correct pouch / bag length by driving correction motor (110 VAC, 4 wire) or (230 VAC, 3 wire)
- ❑ Digital F/R Controllers are with built in Production Counter & Speed Indicator makes these Controllers most cost Effective

PRINT MARK SENSORS & LOGIC CONTROLLERS

PROXIMON

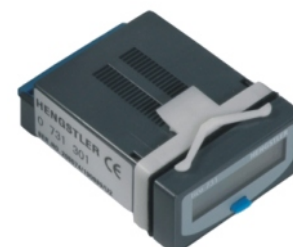
- Incremental Encoders (Shaft / Hollow Shaft) - It generates a signal for each incremental change in position. Encoder diameter ranges from 30 to 76mm with push- pull / push-pull complementary / line driver (RS422) outputs are available
- Absolute Shaft Encoders - It assigns a unique, digitally encoded signal to each individual measured increment. Single turn as well as multi- turn types are available



ENCODERS

HENGSTLER, GERMANY

- Totalising Counters
 - 8 digit LCD
 - Input voltage 5-30 vdc / 20-250 vac/dc
 - Electrical reset
 - Key lock facility
- Hour Meter
 - Low Cost
 - DIN dimensions 24 X 48 mm, 48 X 48 mm
 - Highly legible display
 - Non reset
- Tico 732 Multifunction Counter
 - Bi- direction Counter
 - Compact Size: 48*48*110 mm
 - 6 Digit, 7.6 mm sharp LED Display
 - Two relay & 2 Transistorised O/p
 - I/P : Encoder, Proximity sensor, Voltage Pulse
 - Counting Frequency : 5 KHZ
 - 5 Basic Functions easily Programmable (Count, Tacho, Time, Shift & Batch Counter)



COUNTING SYSTEM

HENGSTLER, GERMANY

- PRiCO (PRogrammable i ntelligent COunter)

PRiCO provides a very cost - effective and reliable solution to many complex counting requirements. What sets PRiCO apart from the conventional counters, is its programmable multifunction facet.

 - **7 Digits Display** - Preset counter, Batch counter, Totaliser
 - **5 Digits Display** - Rate Indicator, RPM Indicator
 - **Input** - Proximity Sensor, Limit switch, Voltage Pulse
 - **Count Frequency**- up to 5 khz
 - **Set Points** - 3 user programmable with 3 Relays
- **Reset Counter**
- **Count cum speed indicator**
- **Totaliser cum Rate Indicator**
- **Speed Controller**



COUNTERS AND INDICATORS

PROXIMON

Model No	I/P	O/P	Enclosure (H x W x D in mm)
A11P24X02B	90-135VAC	24V / 2.5A	60 x 152 x 108
A11P24X5B		24V / 5A	60 x 152 x 108
A11P24X10B		24V / 10A	96 x 172 x 122

Model No	I/P	O/P	Enclosure (H x W x D in mm)
A21P5X6B	180-270VAC	5V / 6A	60 x 152x 108
A21P5X10B		5V / 10A	60 x152 x 108
A21P5R3B		5-9V / 3A	60 x 152 x 108
A21P10R4B		10-15V / 4A	60 x 152 x 108
A21P12X4B		12V / 4A	60 x 152 x 108
A21P12X5B		12V / 5A	60 x 152 x 108
A21P12X10B		12V / 10A	96 x 172 x 122
A21P12X20B		12V / 20A	96 x 172 x 122
A21P24X02B		24V / 2.5A	60 x 152 x 108
A21P24X5B		24V / 5A	60 x 152 x 108
CA21P24X5B		24V / 5A	60 x 152 x 108
A21P24X06B		24V / 6.25A	65 x 172 x 116
A21P24X10B		24V / 10A	96 x 172 x 122
CA21P24X10B		24V / 10A	96 x 96 x 240
A21P24X15B		24V / 15A	96 x 172 x 122
A21P24X20B		24V / 20A	96 x 240 x 210
A21P24X30B		24V / 30A	96 x 240 x 210
A21P28X4B		28V / 4A	60 x 152 x 108
A21P110X1B		110V / 1A	96 x 172 x 122

Model No	I/P	O/P	Open PCB (H x W x D in mm)
A21P5X2N	180-270 VAC	5V / 2A	45 x 60 x 110
A21P12X2N		12V / 2A	45 x 60 x 110
A21P14R10N		14-24V / 10A	55 x 165 x 135

Model No	I/P	O/P	Enclosure (H x W x D in mm)
D24E48X10B	24VDC	48V / 10A	100 x 290 x 305
D110E24X02B	110VDC	24V / 2.5A	60 x 152 x 108
D110E24X5B	110VDC	24V / 5A	60 x 152 x 108

Model No	I/P	O/P	Enclosure (H x W x D in mm)
AU1P24X3B	90 - 270VAC	24V / 3A	60 x 152 x 108
AU1P12X5B		12V / 5A	60 x 152 x 108

Model No	I/P	Multiple output			Open PCB (H x W x D in mm)
		O/P1	O/P2	O/P3	
220367M10	180-270VAC	5V / 1A	+12V / 0.5A	-12V/0.5A	45 x 120 x 100
220367M20	180-270VAC	12V / 0.5A	24V / 2A		45 x 130 x 85
220367M30	90-200VDC	12V / 0.8A	-12V / 0.8A		45 x 110 x 60
220367M40	90-200VDC	5V / 1A	+12V / 0.5A	-12V/0.5A	45 x 120 x 100
220367M50	180-270VAC	5V / 275mA	12V / 275mA		25 x 75 x 35
220367M60	180-270VAC	5V / 3A	+12V /1A	-12V /1A	60 x 108 x 152
220367M70	180-270VAC	5V / 3A	12V / 1A		60 x 108 x 152
220367M80	180-270VAC	5V / 0.5A	14V / 1A		45 x 110 x 60

Model No	I/P	Multiple output			Enclosure (H x W x D in mm)
		O/P1	O/P2	O/P3	
220367M90	180-270VAC	5V/2A	+12V/0.5A	-12V/0.5A	60 x 108 x 152

(Design & supply of Non-Standard customised requirement from OEMs is undertaken on priority)



SWITCH MODE POWER SUPPLIES CE

PROXIMON

PROXIMON
We Command and Control



PROXIMON CONTROLS PVT. LTD.

Office:

202, Krishna, Laxmi Industrial Complex, Pokharan Road No.1, Vartak Nagar, Thane- 400 606, India

Tel: 91-22-2588 9244 /45, 2585 4287 Fax: 91-22-2588 9246

e-mail: info@proximon.com Website: www.proximon.com

Works:

Automation House, Plot No. EL-18, T.T.C. Industrial Area, Electronic Zone, Mahape, Navi Mumbai-400701, India

